



9 Lot Subdivision For Sale in Cumberland, Maine

Spectrum
REAL ESTATE



Jessie Demers

84 Middle Street, Portland, Maine

JessieDemersRealtor@gmail.com

720.320.1391

Jessiepinkhamdemers.realtor



The location is simply unparalleled; just minutes from the coastline, the tranquil islands of Casco Bay and Broad Cove Reserve. Minutes from Cumberland's acclaimed #1 schools, Falmouth Country Club, Woodlands Country Club, Val Halla Golf Course, Toddy Brook Golf Course and right down the street from Twin Brooks Recreation Fields. Minutes to I-295, I-95, Route 1 and Route 88.



property lines are approximate



Welcome to Coastal Pines, Cumberland's newest luxury subdivision. This is your opportunity to create your legacy in one of Maine's most coveted locations. This exclusive collection of nine estate-sized wooded lots. Ranging from 1.22 to 1.33 acres, offers a rare blend of privacy and refined living. Each lot abuts over 14 acres of wooded open space. Custom builder Eric Hallee, owner of Eco-Pro Construction has multiple build packages to choose from or buy the lot and bring your own builder.





To Be Built:
Plan #623143DJ
View Floor Plans

- 4 Bedrooms, 5 Bathrooms
- 4,057 sqft
- 3 Car Garage
- 2 Story great rooms, 3 fireplaces





To Be Built:
Plan #39110ST
[View Floor Plans](#)

- 4 Bedrooms, 3.5 Bathrooms
- 3,369sqft
- 3 Car Garage
- Great Rooms on 1st & 2nd floors



To Be Built:
Plan #62818DJ
View Floor Plans

- 4 Bedrooms, 3.5 Bathrooms
- 2,997 sqft
- 2 Car Garage
- Two Story Great Room





To Be Built:
Plan #710377BTZ
View Floorplans

- 4 Bedrooms, 4.5 Bathrooms
- 2,911 sqft
- 2 Car Garage
- 1st Floor Primary Suite





To Be Built:
Plan #14699RK
View Floorplans

- 3 Bedrooms, 2.5 Bathrooms
- 2,934 sqft
- 2 Car Garage
- 2nd Floor Loft





To Be Built:
Plan #623243DJ
View Floorplans

- 4 Bedrooms, 3.5 Bathrooms
- 2,800 sqft
- 3 Car Garage
- 2nd Floor Primary





To Be Built:
Plan #444390GDN
View Floor Plans

- 4 Bedrooms, 3 Bathrooms
- 2,804 sqft
- 2 Car Garage
- Two Story Great Room



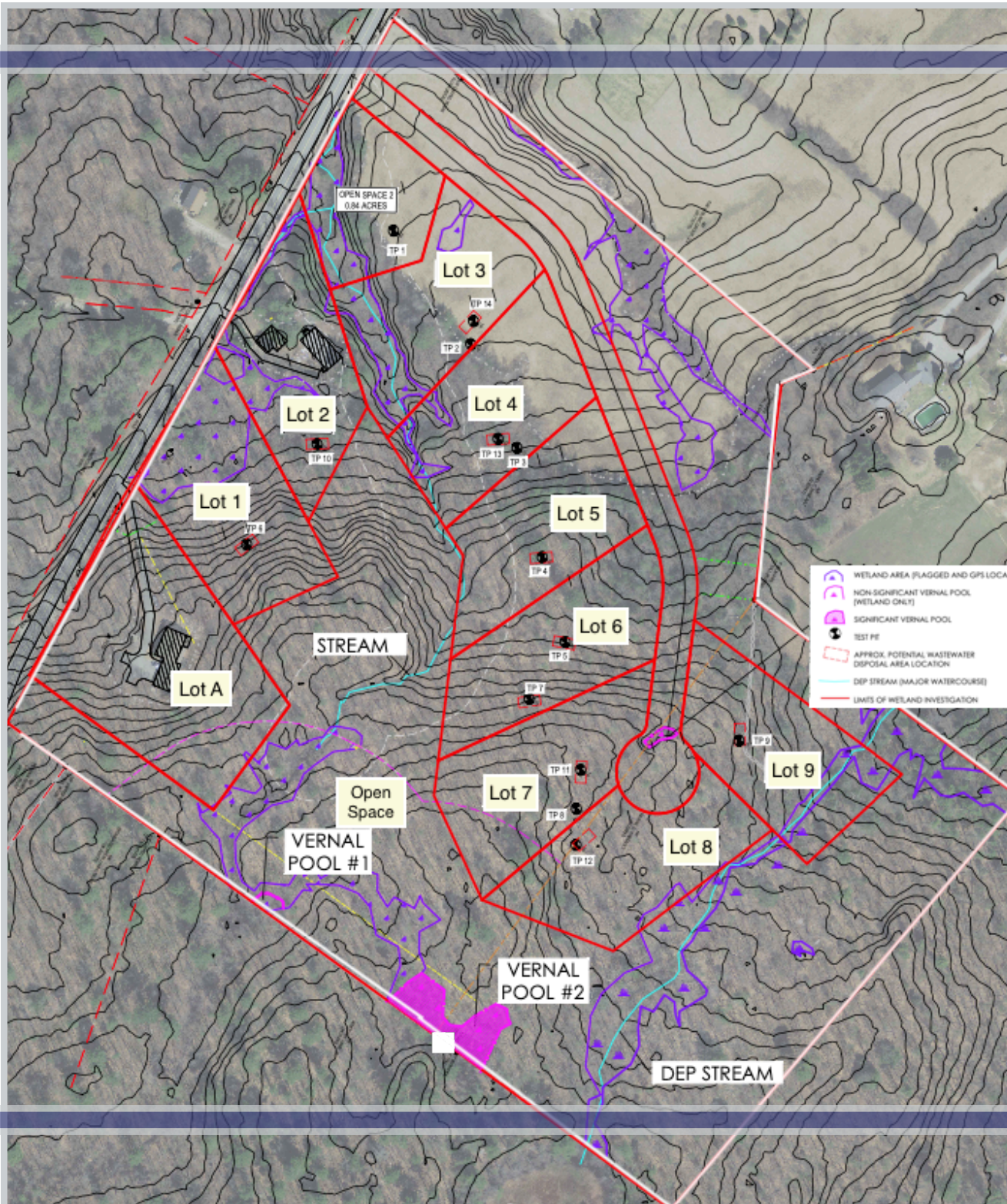


To Be Built:
Plan #280104JWD
View Floor Plans

- 3 Bedrooms, 2.5 Bathrooms
- 2,797 sqft
- 2 Car Garage
- 1st Floor Primary





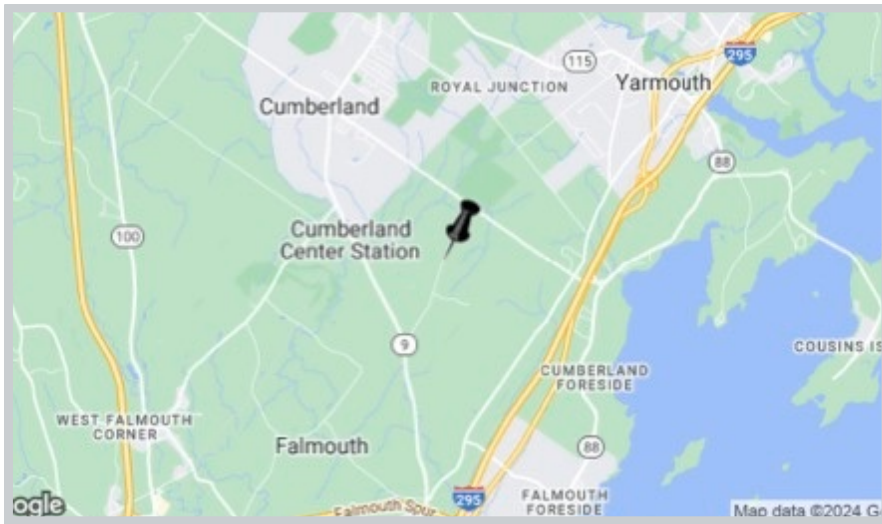




COASTAL PINES SUBDIVISION

- 9 Lots
- 1.22-1.33 Acre Lot Sizes
- Underground Fiber & Cable
- Septic & Well
- Underground Power Lines
- Summit Natural Gas
- Minimum Build Size 2,800sqft
- 14+ Acres of Wooded Open Space
- Minutes to Route 1, 95 & 295

Don't miss this chance to secure your piece of Cumberland's most anticipated development. With limited availability and strong demand, these pristine homesites present an extraordinary investment.



Spectrum
REAL ESTATE



Jessie Demers

84 Middle Street, Portland, Maine
JessieDemersRealtor@gmail.com
720.320.1391
Jessiepinkhamdemers.realtor

