



9 Lot Subdivision For Sale in Cumberland, Maine

Spectrum
REAL ESTATE



Jessie Demers

84 Middle Street, Portland, Maine

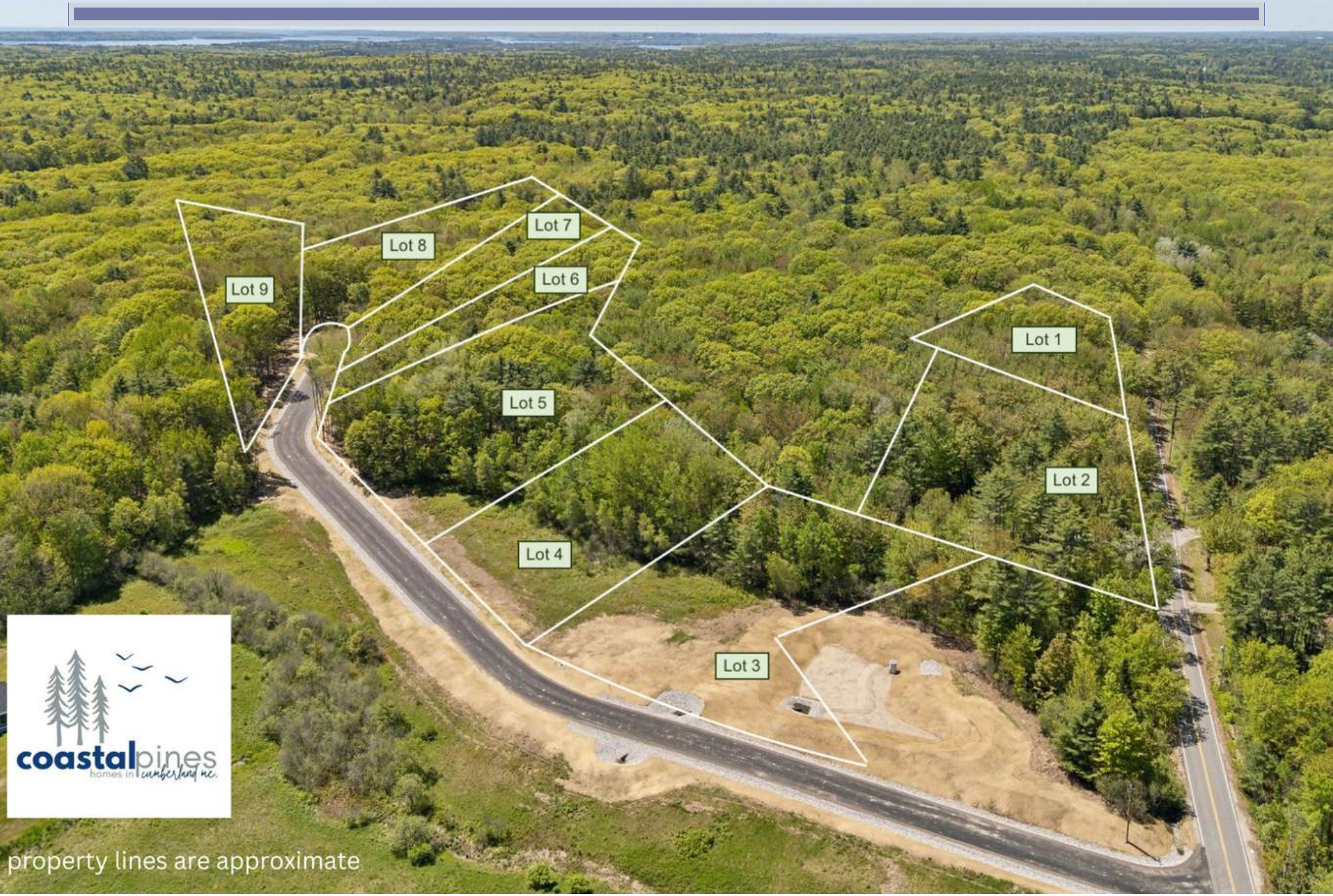
JessieDemersRealtor@gmail.com

720.320.1391

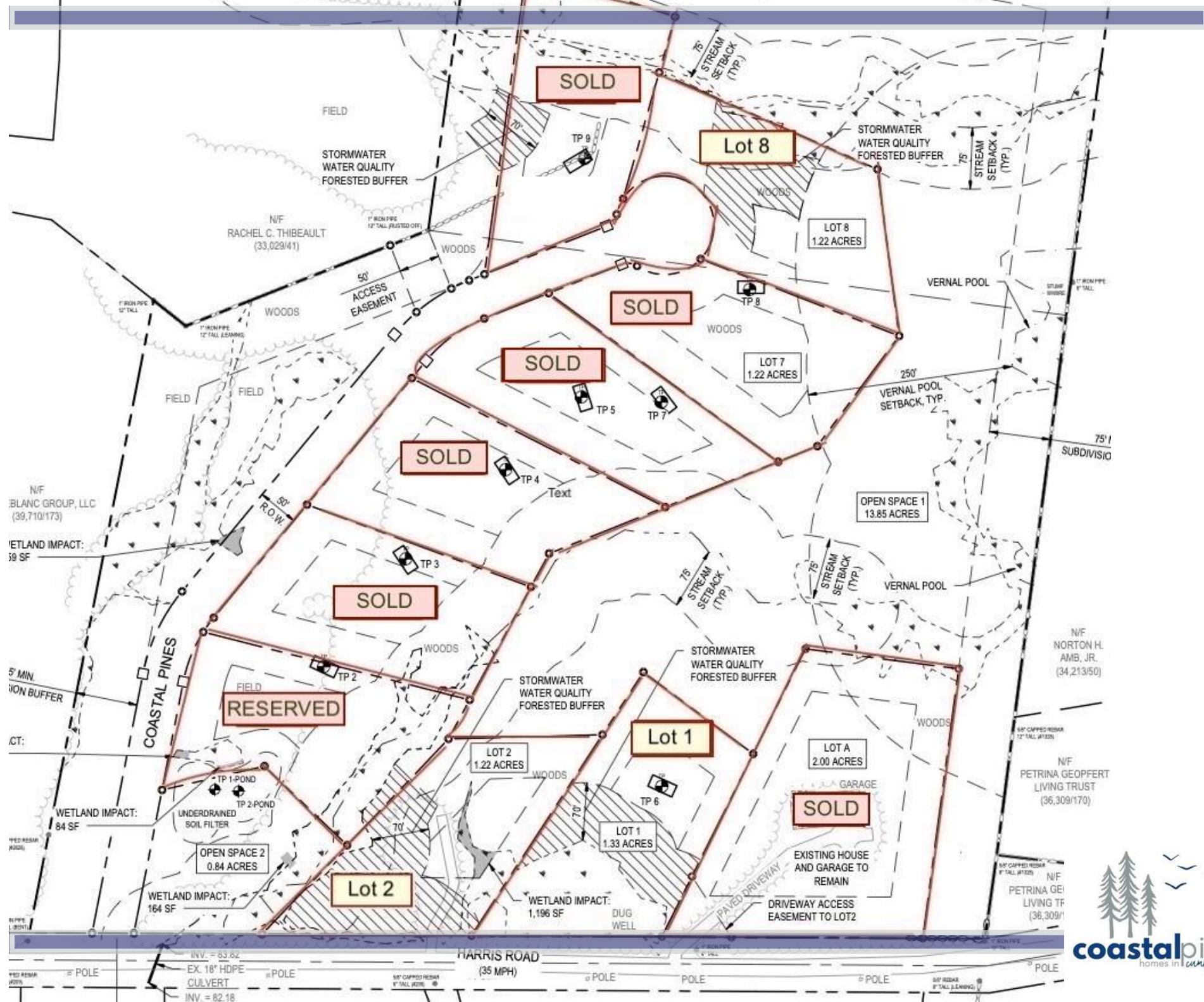
Jessiepinkhamdemers.realtor



The location is simply unparalleled; just minutes from the coastline, the tranquil islands of Casco Bay and Broad Cove Reserve. Minutes from Cumberland's acclaimed #1 schools, Falmouth Country Club, Woodlands Country Club, Val Halla Golf Course, Toddy Brook Golf Course and right down the street from Twin Brooks Recreation Fields. Minutes to I-295, I-95, Route 1 and Route 88.



property lines are approximate



Welcome to Coastal Pines, Cumberland's newest luxury subdivision. This is your opportunity to create your legacy in one of Maine's most coveted locations. This exclusive collection of nine estate-sized wooded lots. Ranging from 1.22 to 1.33 acres, offers a rare blend of privacy and refined living. Each lot abuts over 14 acres of wooded open space. Custom builder Eric Hallee, owner of Eco-Pro Construction has multiple build packages to choose from or buy the lot and bring your own builder.





To Be Built:
Plan #623143DJ
View Floor Plans

- 4 Bedrooms, 5 Bathrooms
- 4,057 sqft
- 3 Car Garage
- 2 Story great rooms, 3 fireplaces



To Be Built:
Plan #39110ST
[View Floor Plans](#)

- 4 Bedrooms, 3.5 Bathrooms
- 3,369sqft
- 3 Car Garage
- Great Rooms on 1st & 2nd floors



To Be Built:
Plan #62818DJ
View Floor Plans

- 4 Bedrooms, 3.5 Bathrooms
- 2,997 sqft
- 2 Car Garage
- Two Story Great Room



To Be Built:
Plan #710377BTZ
View Floorplans

- 4 Bedrooms, 4.5 Bathrooms
- 2,911 sqft
- 2 Car Garage
- 1st Floor Primary Suite



To Be Built:
Plan #14699RK
View Floorplans

- 3 Bedrooms, 2.5 Bathrooms
- 2,934 sqft
- 2 Car Garage
- 2nd Floor Loft



To Be Built:
Plan #623243DJ
[View Floorplans](#)

- 4 Bedrooms, 3.5 Bathrooms
- 2,800 sqft
- 3 Car Garage
- 2nd Floor Primary



To Be Built:
Plan #50231PH
View Floor Plans

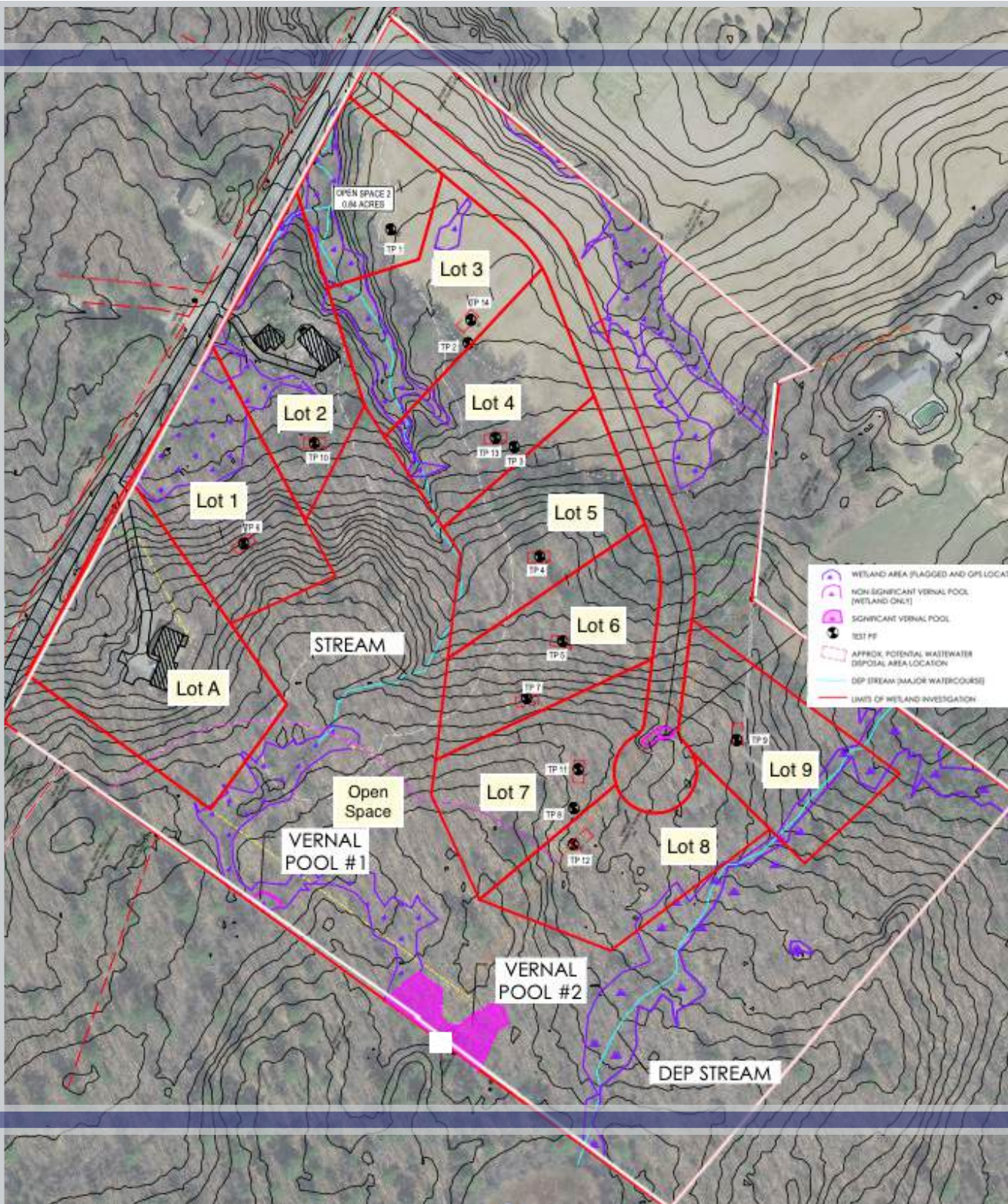
- 4 Bedrooms, 2.5 Bathrooms
- 2,010 sqft
- 2 Car Garage



To Be Built:
Plan #444390GDN
[View Floor Plans](#)

- 4 Bedrooms, 3 Bathrooms
- 2,804 sqft
- 2 Car Garage
- Two Story Great Room



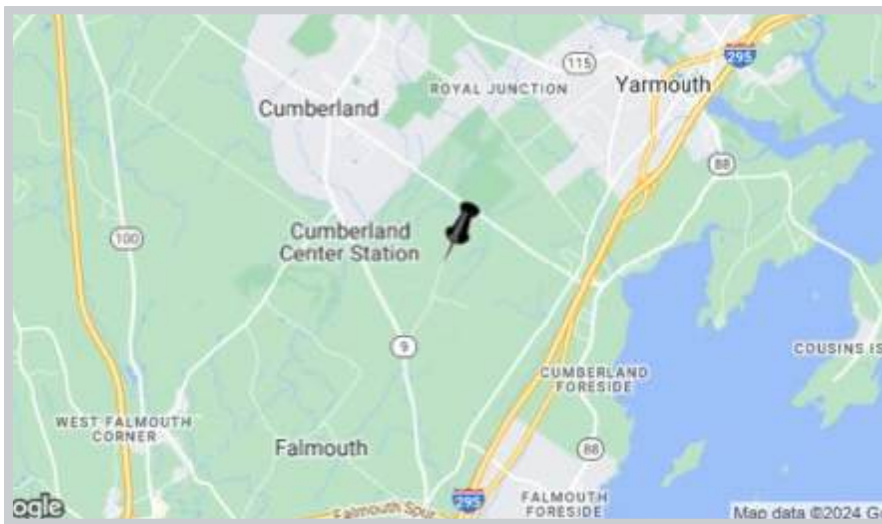




COASTAL PINES SUBDIVISION

- 9 Lots
- 1.22-1.33 Acre Lot Sizes
- Underground Fiber & Cable
- Septic & Well
- Underground Power Lines
- Summit Natural Gas
- 14+ Acres of Wooded Open Space
- Minutes to Route 1, 95 & 295

Don't miss this chance to secure your piece of Cumberland's most anticipated development. With limited availability and strong demand, these pristine homesites present an extraordinary investment.



Spectrum
REAL ESTATE



Jessie Demers

84 Middle Street, Portland, Maine
JessieDemersRealtor@gmail.com
720.320.1391
Jessiepinkhamdemers.realtor

