



The Residences

AT BETHEL STATION

38 New Condos Starting at \$540k - Completion Winter 2026

The Residences at Bethel Station are built for real life, moving seamlessly from powder mornings to patio evenings. Inside, you'll find warm wood floors, granite countertops, stainless steel appliances, and refined finishes that feel elevated.

Each unit includes private outdoor space, offering a place to relax and reconnect. Elevators, secured access, central air, and smart, aging-in-place layouts make ownership easy for the long term or as an investment property.

Walk to Bethel Village, reach Sunday River in minutes, and enjoy a pet-friendly community with a fitness center, storage, and shared spaces. **Designed for comfort, healthy living, and year-round rental potential.**



AT THE JUNCTION OF COMMUNITY & ADVENTURE



TONY DONOVAN

✉ methodrealtor@gmail.com

☎ 207-329-6732



JESSIE DEMERS

✉ jessiedemersrealtor@gmail.com

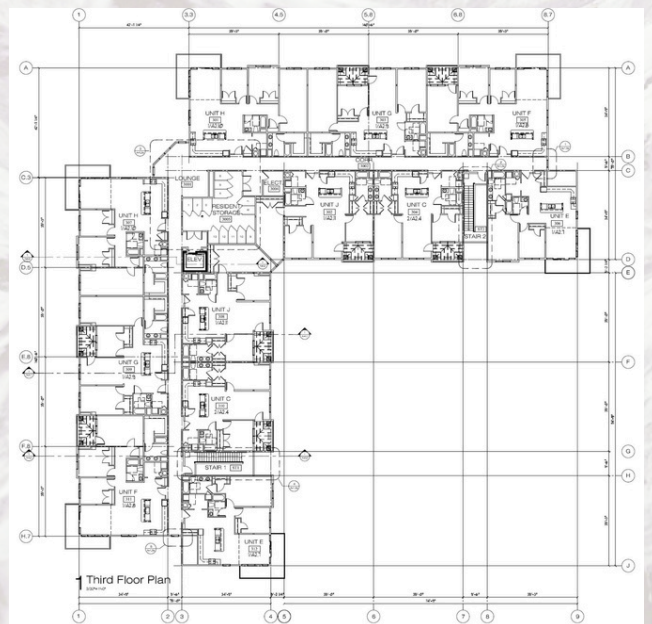
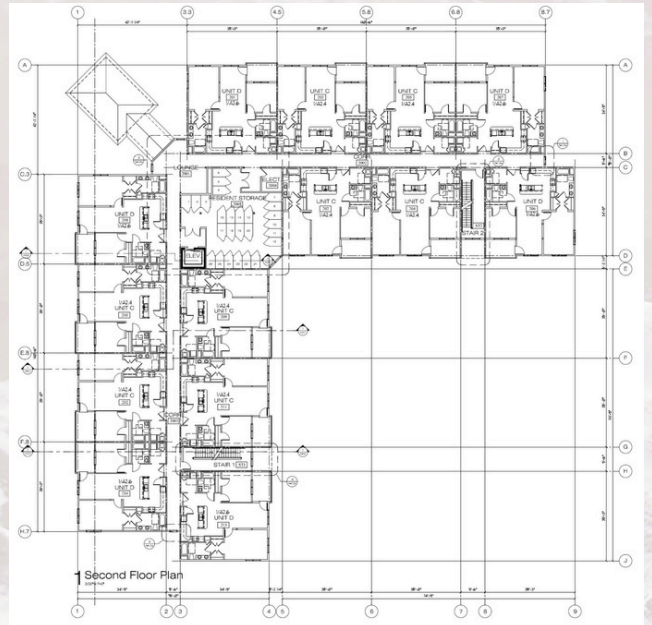
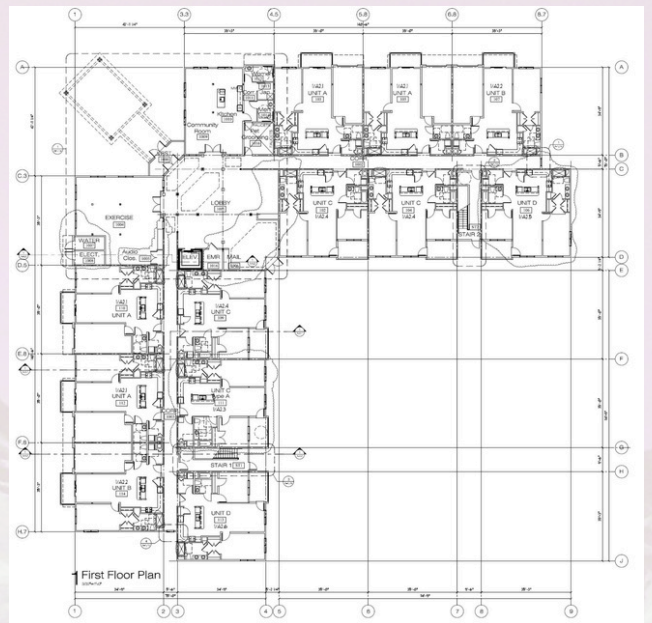
☎ 720-320-1391

THE FLOOR PLANS

Thoughtfully designed floor plans offer a range of layouts to suit how you live, whether you're here for weekend escapes or year-round living.

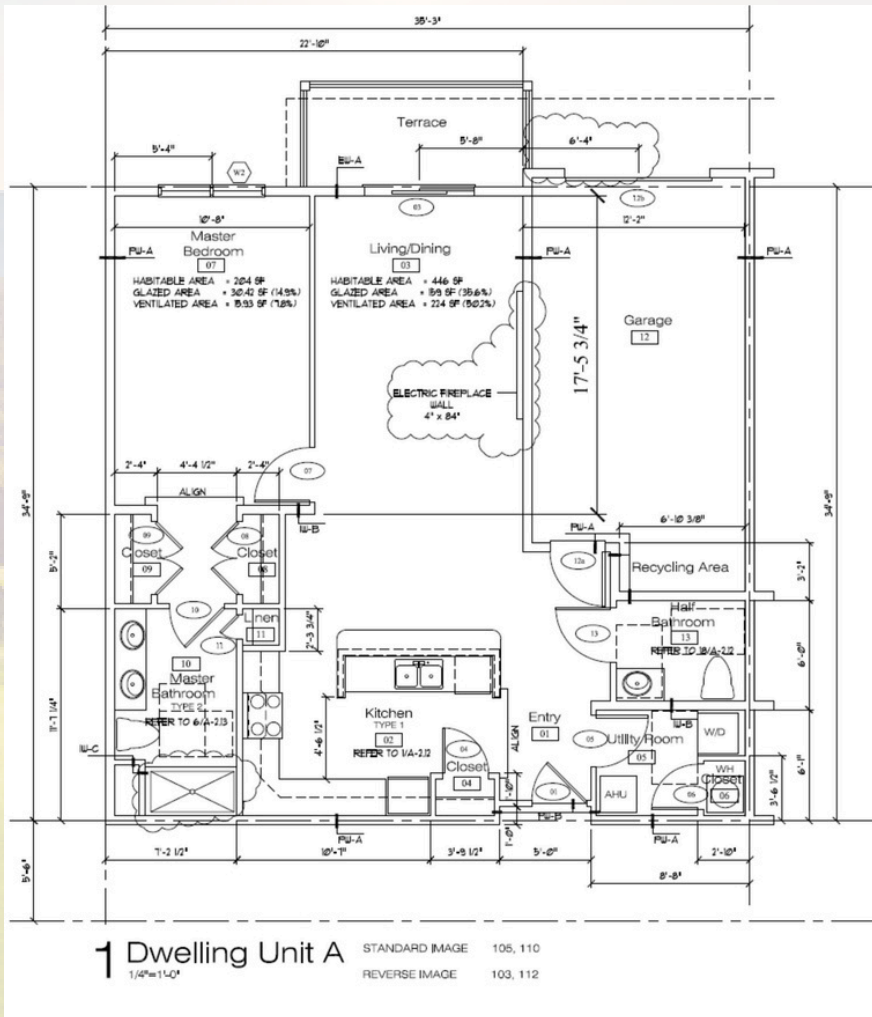
Each residence is designed with flow, functionality, and comfort in mind, maximizing natural light and livable space.

From open-concept living areas to private outdoor spaces, every detail is considered. Explore each floor to find the layout that fits your lifestyle.



THE UNITS

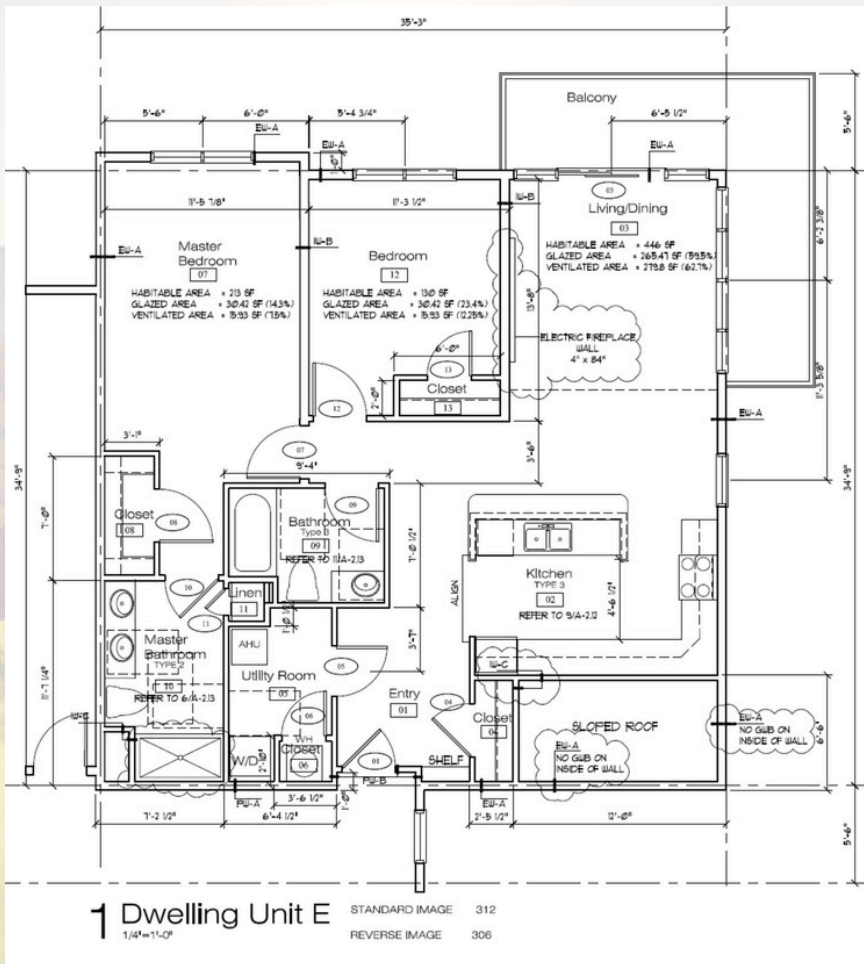
FIRST TRACKS: \$540,000



1st Floor Northern Mountain View

- Units #103, #105, #110 & #112
- 1,237 +/- SF
- One Bedroom/1.5 Bath
- 1-Car Direct Entry, Heated Garage
- Garden Terrace
- Primary Suite with walk-in closet & full bath
- Stainless Steel Appliances
- Electric Fireplace
- Granite Countertops
- Custom Cabinets
- Hardwood, Tile & Carpet Flooring
- Single Floor Living designed for convenience and accessibility

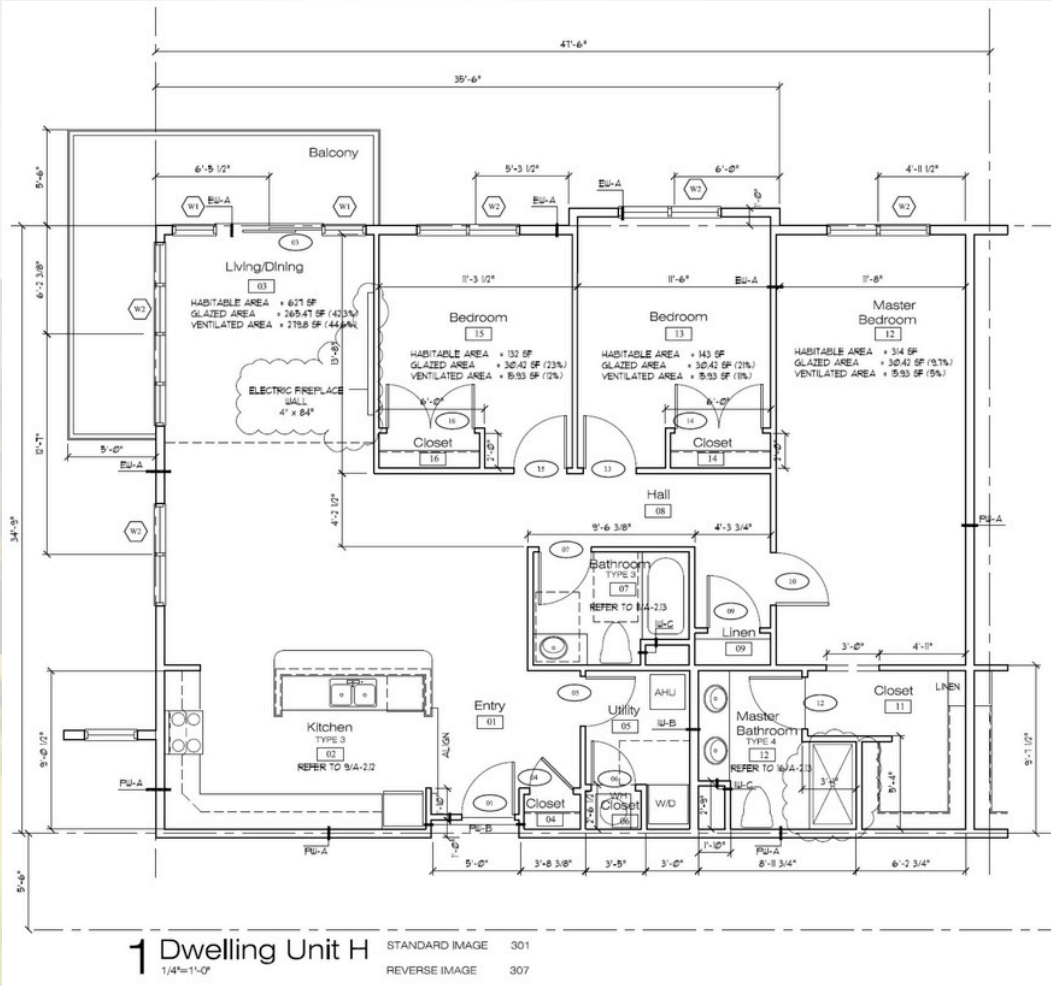
BACK COUNTRY: \$540,000 TO \$582,000



1st & 2nd Floors

- All End Units
- Units #106 ADA, #113
- Units #201, #206, #207, #208
- Units #213, #214 • 1,168 +/-SF
- Two Bedroom / 2 Bath
- 1st floor units have a Garden Terrace
- 2nd floor units have a Covered Balcony
- Primary Suite with a walk-in closet & full
- Stainless Steel Appliances
- Electric Fireplace
- Granite Countertops
- Custom Cabinets
- Hardwood, Tile & Carpet Flooring
- Single Floor Living is designed for convenience and accessibility

SUMMIT: \$ 895,000



3rd Floor – End Unit North Mountain View

- Units #301 & #307
- 1,616 +/- SF
- Three Bedroom/ 2 Bath
- Wrap-around Balcony
- Transom Windows in Living Room
- Primary Suite with walk in closet & full bath
- Stainless Steel Appliances
- Electric Fireplace
- Granite Countertops
- Custom Cabinets
- Hardwood, Tile & Carpet Flooring
- Single Floor Living designed for convenience and accessibility
- Ample Space for 4-Season Activities



CONTACT THE TEAM



TONY DONOVAN

✉ metodrealtor@gmail.com

☎ 207-329-6732

Anthony J. Donovan (Tony) has been a licensed Maine Realtor® since 1982. In addition to his residential and commercial brokerage expertise, Tony has extensive experience in real estate development, guiding residential and commercial projects from concept through completion and providing strategic insight on investment opportunities.

JESSIE DEMERS

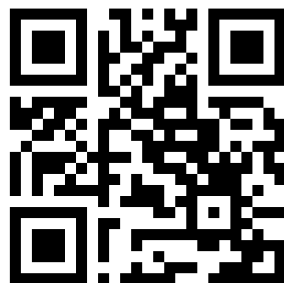
jessiedemersrealtor@gmail.com ✉

720-320-1391 ☎

Jessie Pinkham Demers is a licensed Real Estate Broker with over 15 years of experience in the real estate industry specializing in residential developments, multi-unit sales, residential leasing, identifying investment properties and residential sales. She was born in Yarmouth, Maine and now resides in Cumberland Foreside with her family.



Brought to you by
Spectrum
REAL ESTATE



bethelstation.com/
spectrumrealestatecompany.com/